

Patriotic Desk Set

by Adrienne Franklin

Pattern Level: Intermediate

Read all instructions before beginning.

In-Box

Materials Needed:

3/4-yard blue print with stars
20"x 30" piece of foam core board
20"x30" piece of poster board
Hot glue gun and sticks
Packing tape
1/2-yard polyester fleece
Craft knife

Cutting:

From Foam Core cut: (outside of box)

1 piece 9 1/2"x12" for bottom
2 pieces 2 1/2" x 12" for sides
2 pieces 2 1/2" x 10" for front and back

From poster board cut: (inside of box)

1 piece 9 3/8"x 11 7/8" for bottom
2 pieces 2 1/8" x 11 3/4" for sides
2 pieces 2 1/8" x 9 3/8" for front and back.

Assembly:

1. Refer to **figure 1** and cut out an opening in the front foam core piece as shown. Center foam core front piece over poster board front piece and trace matching opening onto the poster board. Cut opening out of poster board front. Place a piece of packing tape along 1 long edge of the outside bottom piece, leaving about half of the tape free as shown in **figure 2**. Tape box side to bottom at a right angle along taped edge as shown in **figure 3**. Repeat for remaining side, opening box so it lies flat after taping. The box front and back will be about 1/4" larger than the bottom on each side, tape them using the same method centering along the bottom. Open box so it lies flat. See **figure 4**.
2. Lay flat box on fleece and trace around. Cut out fleece and glue to the outside of the flat box. Lay flat box on the wrong side of the fabric and trace around adding a 1" seam allowance all the way around. Cut out fabric and glue to the outside of the box folding in seam allowances, clipping inner corners and folding in fullness at outer corners. **Figure 5** shows the inside of the box with the fabric glued in place.
3. Fold to make box gluing together at the corners.

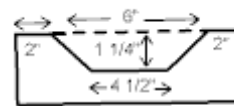


Fig. 1

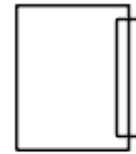


Fig. 2

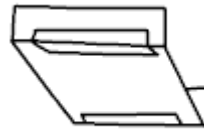


Fig. 3

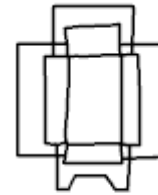
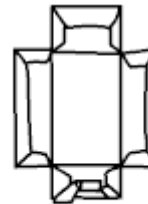


Fig. 4

Outside of box



Inside of Box

Fig. 5

4. Lining. Lay each poster board piece on the wrong side of the fabric and trace around adding a 1/2" seam allowance all around. Cut out lining pieces and glue to corresponding poster board pieces folding in seam allowances (clip inner corners and folding in fullness) to inside of poster board. Glue completed lining sections to the inside of the box.

Blotter and Pencil Cup

Blotter Size: 19"x 24"

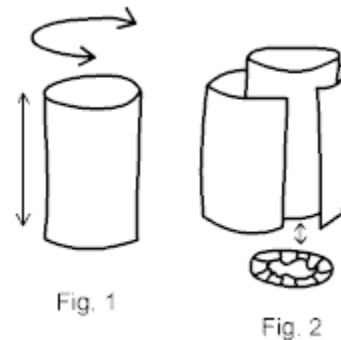
Materials Needed:

- 7/8-yard red with stars
- 3/4-yard patch print
- 20"x30" piece of foam core board
- 20"x30" piece of illustration board
- Small piece of poster board
- Hot glue gun and glue sticks
- 1/4-yard polyester fleece
- Craft knife
- Can of desired size for pencil cup

Pencil Cup

Cutting and Assembly:

1. Measure the circumference of the outside of the can and the height. See **figure 1**. Cut a piece of fleece to this size and glue to the outside of the can. Add a 1" seam allowance all around to the measurement of the can and cut out a piece of fabric this size. Glue to the outside of the can folding in seam allowances along the bottom and side edges and folding seam allowance at top over the top edge of the can, clipping as necessary. Trace around the bottom of the can on a piece of poster board and cut out. Lay poster board circle on the wrong side of fabric and trace around adding a 1/2" seam allowance. Cut out fabric circle and glue to poster board circle clipping and gluing under seam allowances. Glue to the bottom of the can. See **figure2**.
2. Lining: Use a tape measure to measure the height and circumference of the inside of the can. Cut a piece of poster board to this size. Lay the poster board on the wrong side of the lining fabric and trace around adding a 1/2" seam allowance. Cut out fabric lining and glue to poster board folding under seam allowances. Glue to the inside of the can.



Blotter

Cutting:

From Foam core cut:

1 piece 19"x24" for front

From illustration board cut:

1 piece 19"x 24" for back

2 pieces 3"x 19" for sides

From Fleece cut:

2 pieces 3"x 19" for sides

From red with stars cut:

2 pieces 5"x 21" for sides

1 piece 21"x 26" for back

From patch print cut:

1 piece 21"x 26" for front

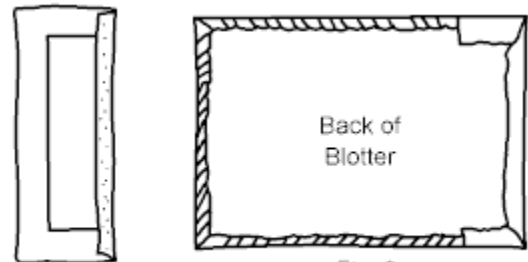
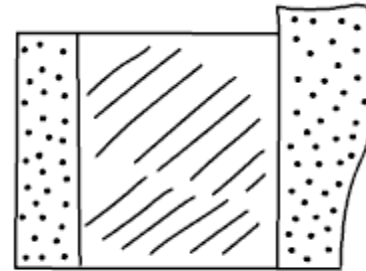


Fig. 1

Fig. 2



Front of Blotter

Fig. 3

Assembly

1. Glue fleece to each side board piece on the front. Refer to **figure 1** and center side board pieces fleece side down on the wrong side of fabric side pieces. Fold the seam allowance to the back of the side boards along 1 long edge and glue. Glue fabric to blotter front folding and gluing seam allowances underneath. Place side sections on blotter front folding remaining side, top and bottom seam allowances of side sections around back of blotter front. Glue in place. See **figures 2 and 3**.
2. Glue fabric to back piece folding in and gluing under seam allowances. Glue back of blotter to front of blotter.

While all possible care has been taken to ensure the accuracy of this pattern, we are not responsible for printing errors or the way in which individual work varies.

©Cranston, a Division of ©Cranston Print Works Company