

# SARA DOLL

Sara - the V.I.P. Heirloom Doll and her Springtime Ensemble

By Adrienne Franklin

**Pattern Level:** Easy - some sewing experience necessary. A good project for a mother and daughter to make together.

**Finished size:** 12"

¼" seam allowance used throughout and has been added. Press carefully step-by-step. Use a small stitch length except where otherwise specified. Read all instructions before beginning.

## Materials needed:

¼ - yard eggshell solid

⅛ - yard solid black

⅛ - yard banana solid

⅜ - yard floral print

Mohair doll hair (we used the kind that came braided in a package, just unbraided to use.)

1 - yard ⅛" yellow ribbon

1 - yellow ribbon rose

¾ - yard ¼" wide lace trim

2 ½" - Velcro ⅝" wide cut in half lengthwise

⅛ - yard heavy weight fusible interfacing

⅜ - yard elastic ⅛" wide

Polyester stuffing, matching thread, fine-line permanent markers - red and black, powder blush for cheeks



## Doll Assembly

1. From eggshell solid cut: 2 doll bodies, 4 upper legs and 4 arms. From solid black cut 4 lower legs.
2. Sew each upper leg to a lower leg keeping right sides facing. **Diagram 1.** Make 4 leg sections.
3. Pin 2 leg sections right sides facing. Stitch, leaving top edge open for turning. Clip curves. Turn leg right side out. Repeat for other 2 leg sections.
4. Stuff each leg firmly to within ¼" of top opening. Baste top of leg closed so seams match at front and back and toes point forward. **Diagram 2.** Set aside.
5. Pin 2 doll body sections right sides facing. Stitch, leaving open on bottom and side where marked. Clip curves. Turn right side out. Press in ¼" hem to inside along bottom edge. **Diagram 3.**
6. Insert legs into open bottom of body about ¼". Pin and stitch through all layers. **Diagram 4.** Stuff body firmly through opening in side of body. Slipstitch opening closed.

- Pin 2 arm sections right sides facing. Stitch, leaving top open for turning. Clip curves, turn right side out. Repeat for other 2 arm sections. Turn in a 1/4" hem to inside on each top open edge of arms. Stuff arms firmly to within a 1/4" of opening. Using a strong thread, use a running stitch to gather the top edge of each arm. Pull up gathers and sew to shoulders with thumbs pointing forward.

**Diagram 5.**

- Place hair over top of head so that it hangs evenly on both sides and covers back of the head. Using a strong thread that matches hair color, sew a backstitch down the middle of doll's head from back to front to form a part and secure hair.

**Diagram 6.** Trim hair to desired length and tie in 2 loose ponytails using 1/8" ribbon. Draw on doll's face using permanent markers and add blush to cheeks. Tip: if you are not sure about marking on the doll's face, try drawing it on first with an air erasable marker, that way if you don't like the position you can re-draw it. If you like the way it looks, just draw over it with the permanent markers.

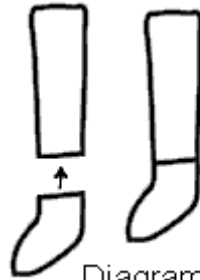


Diagram 1



Diagram 2

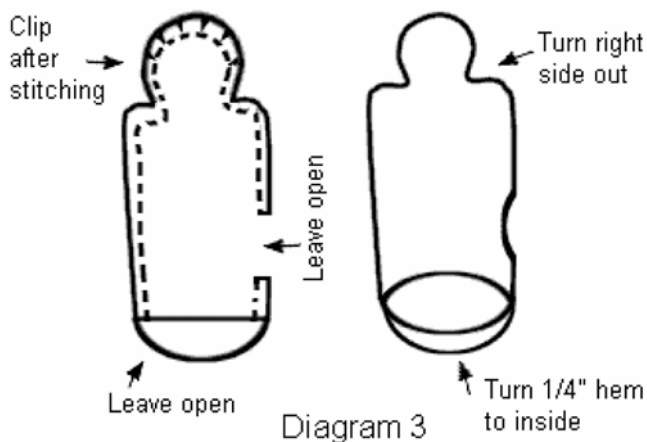


Diagram 3

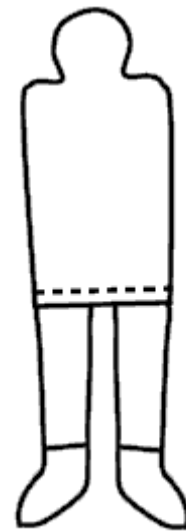


Diagram 4

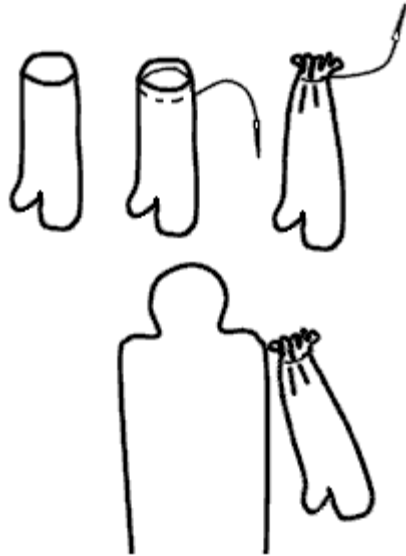


Diagram 5

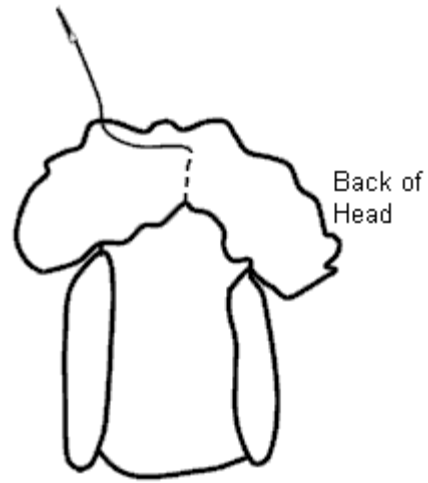


Diagram 6

**Springtime Outfit Assembly:  
Pantaloons:**

1. From banana solid cut: 2 pantaloon pieces. With right sides facing sew pantaloons together along 1 crotch seam. Press seam to one side. Cut a piece of elastic 6" long. Draw a light pencil line  $\frac{3}{8}$ " from the top edge of the pantaloons on the wrong side of the fabric. Tack elastic to the beginning of the line and stretch along the line sewing with a straight stitch or a zigzag stitch. **Diagram 7.** Fold over raw edge along elastic and stitch to form casing.
2. Press under a  $\frac{1}{4}$ " narrow hem on the bottom of each leg. Cut and sew a piece of lace to the inside bottom of each leg so most of the lace is visible from the right side. With right sides facing, sew other crotch seam. Sew inner leg seam. **Diagram 8.** Turn right side out.

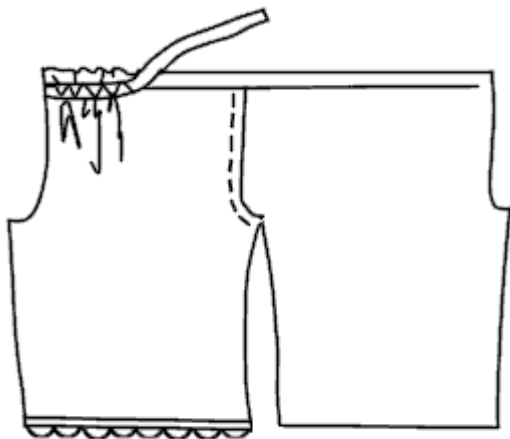


Diagram 7

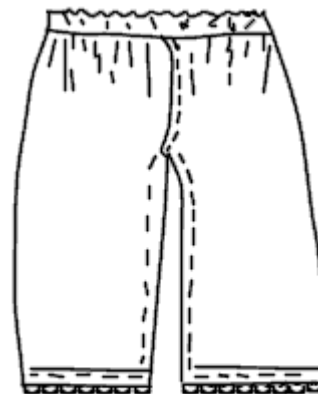


Diagram 8

## Dress and Bonnet:

1. From floral fabric cut: 1 bodice front, 2 bodice backs, 2 bonnet brims, 1 bonnet and 2 skirt pieces 5" x 11".
2. Sew bodice front to bodice backs right sides together at shoulders and under arm seams. Clip under arm curve. **Diagram 9**. Press under and stitch a 1/4" to wrong side along neck edge, clipping curve if necessary. Stitch lace trim to neck edge. Press and stitch a 1/4" narrow hem along the bottom of each sleeve. Stitch back seam, right sides facing, stopping at mark indicated. Stitch lace trim to neck edge.
3. With right sides facing sew short sides of skirt pieces together to form side seams of skirt. Sew a 1/4" narrow hem on lower edge of skirt. Using a long machine stitch sew 2 rows of gathering stitches, one a 1/4" from the top edge of the skirt and one a 1/8" from the edge. Pin to bodice right sides together, matching side seams. Pull up gathers to fit. Stitch waist seam, press towards bodice. **Diagram 10**.
4. Sew 1 piece of Velcro to each back opening edge for closure, having the right back overlap the left. **Diagram 11**. Take a 1/4" tuck at front neck edge and sew a ribbon rose on top to tack down.
5. For bonnet - use brim pattern piece to cut 1 brim out of interfacing. Apply interfacing to the wrong side of 1 floral brim piece following manufacturer's directions. **Diagram 12**.
6. Place brims right sides facing and stitch along curved edge. Clip curves and turn right side out. **Diagram 12**. Baste raw edges together.
7. Hem bottom edge of bonnet using a 1/4" narrow hem. Cut a piece of elastic 3 1/2". Draw a light pencil line on the wrong side of bonnet piece 1/4" above narrow hem. Apply elastic to line by tacking down at the beginning of the line and stretching elastic as its stitched with a straight or zigzag stitch. **Diagram 13**.
8. Using a long machine stitch sew two rows (one row 1/8" from edge, one 1/4" from edge) of gathering stitches along top curved edge of bonnet. Pin bonnet to brim right sides facing matching center marks and ends. Pull up gathers to fit. Stitch. **Diagram 14**.
9. Cut 2 pieces of ribbon each 9" long. Tack one ribbon on each side of bonnet at the bottom of the brim. Cut other end of ribbon on the diagonal to prevent fraying.
10. Dress doll in outfit.

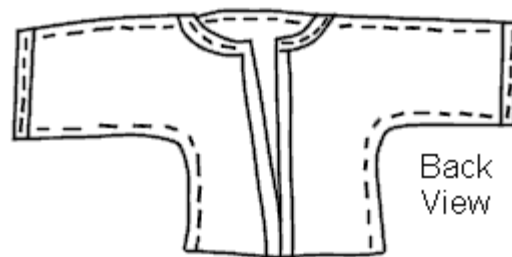
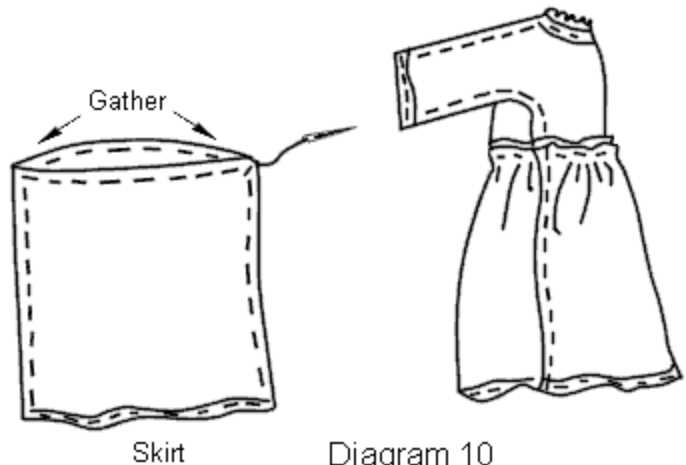


Diagram 9



Skirt

Diagram 10

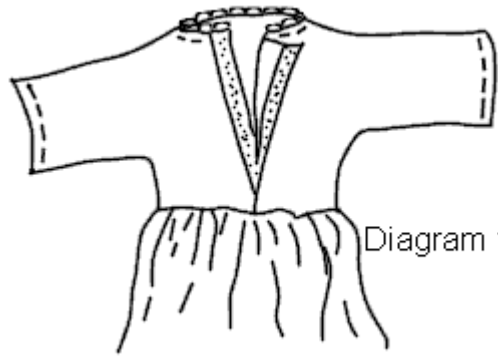


Diagram 11

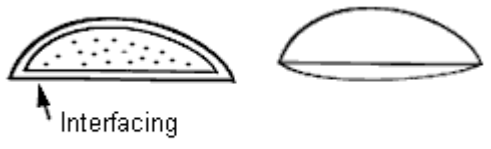


Diagram 12



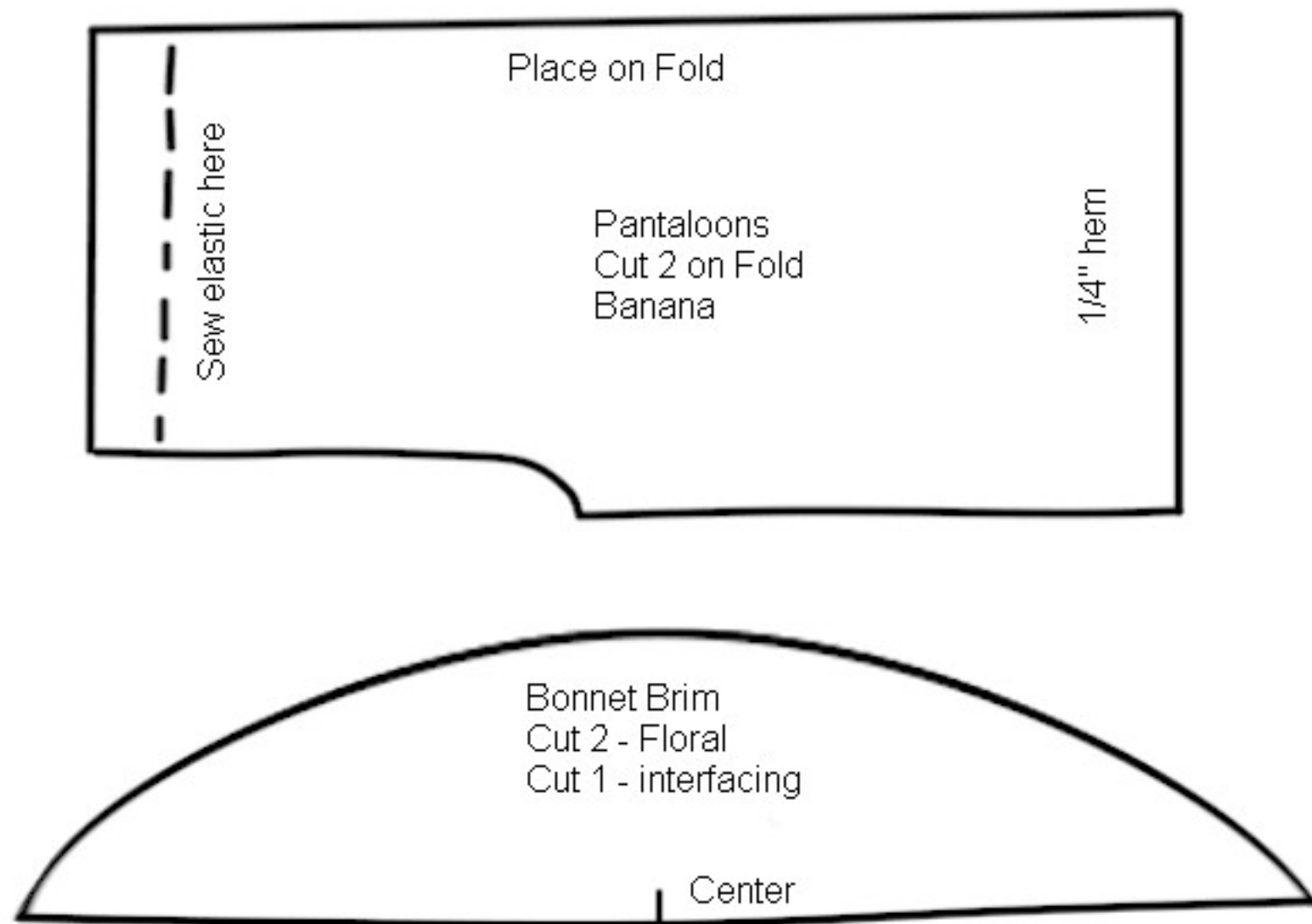
Diagram 13

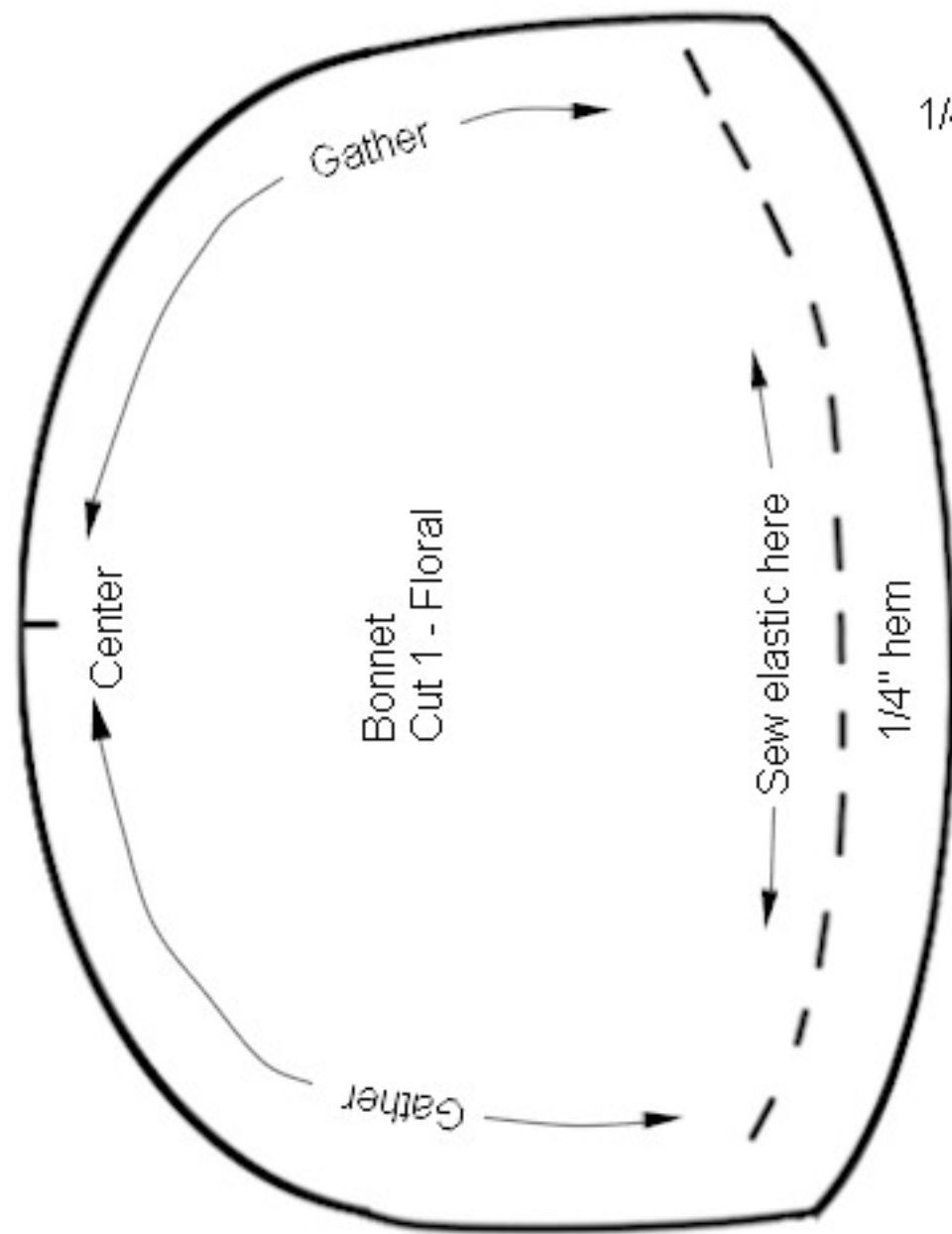


Diagram 14

While all possible care has been taken to ensure the accuracy of this pattern, we are not responsible for printing errors or the way in which individual work varies.

1/4" Seam allowance included.





1/4" Seam allowance included.

Bonnet  
Cut 1 - Floral

Sew elastic here

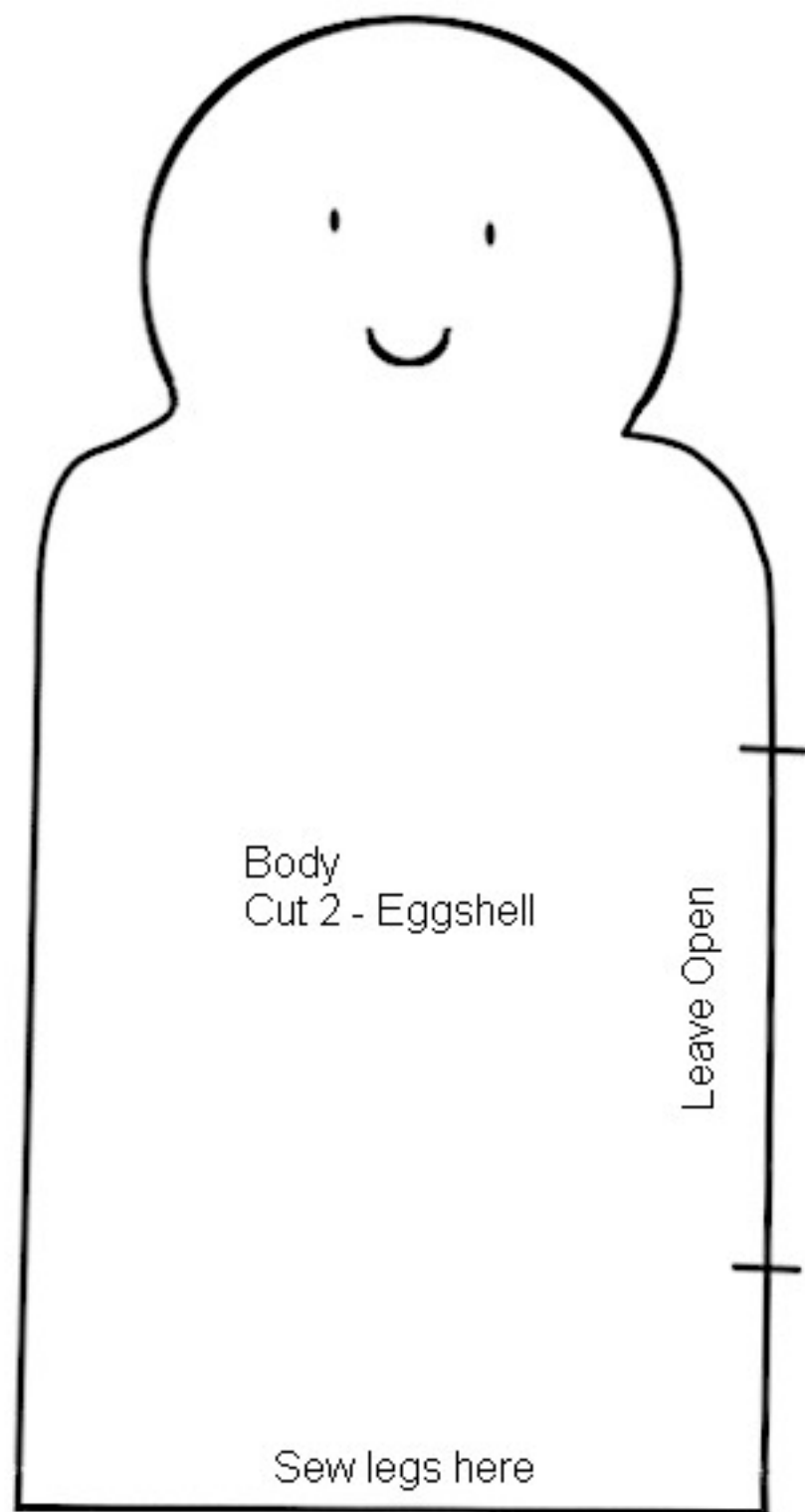
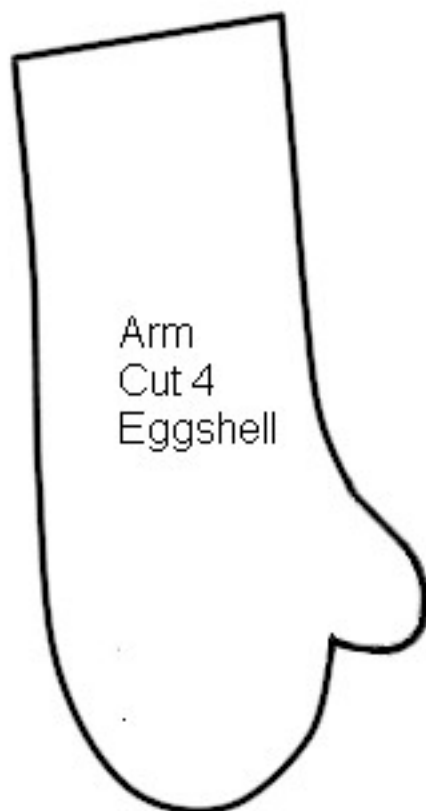
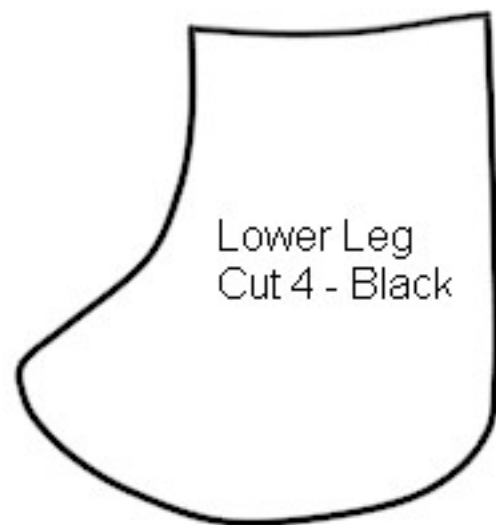
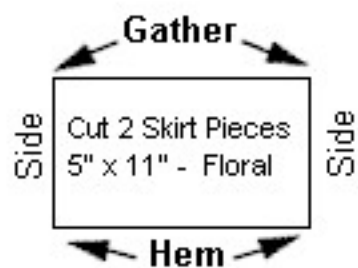
1/4" hem

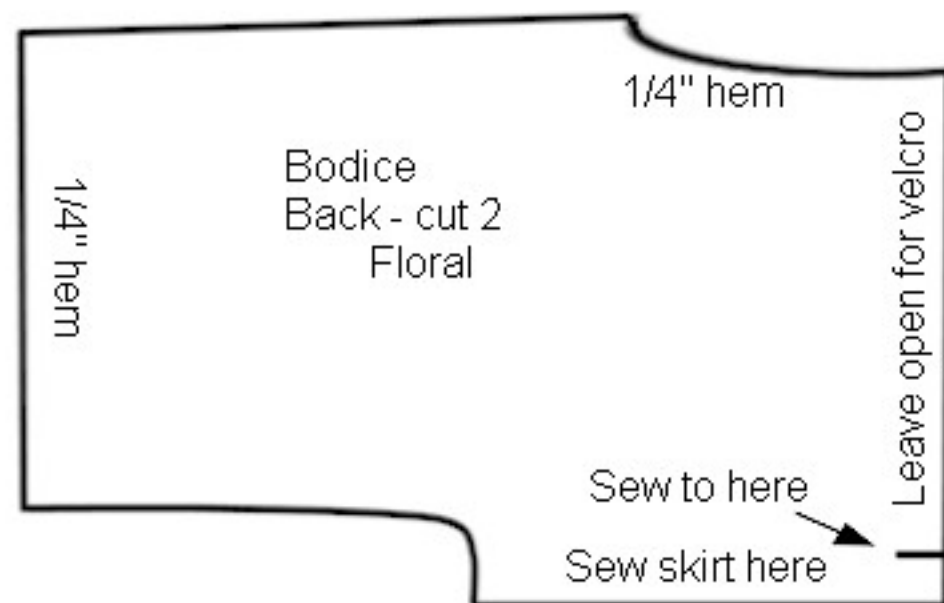
Gather

Center

Gather

1/4" Seam allowance included.





1/4" Seam allowance included.

