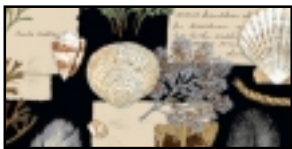


# Beachcomber



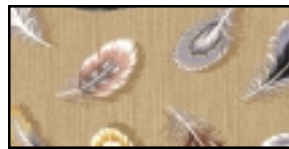
Finished size: 50 1/4" x 50 1/4"



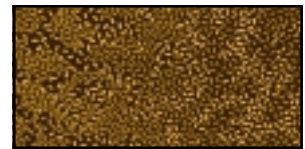
92091 J (outside border and backing)  
3 1/3 YDS



92097 EG (background)  
1 YD



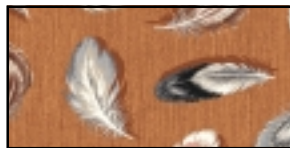
92093 E (block background)  
5/8 YD



92094 S (accent & binding)  
2/3 YD



92097 J (block 1 black)  
1/4 YD



92093 C (block 1 center)  
1/4 YD



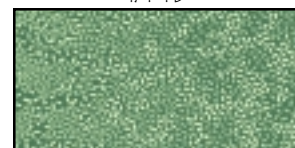
92095 G (block 1 green)  
1/4 YD



92095 J (block 2 black)  
1/4 YD



92094 C (block 2 center)  
1/4 YD



92094 G (block 2 green)  
1/4 YD

Skill Level: Intermediate

### Cutting

#### Block Background

18 - 3 7/8" sqs - draw line corner to corner on wrong side

72 - 2" sqs - draw line corner to corner on wrong side

**Block 1-Black**      **Block 1-Green**      **Block 1-Center**

20 - 3 1/2" sqs      10 - 3 7/8" sqs      5 - 3 1/2" sqs

**Block 2-Black**      **Block 2-Green**      **Block 2-Center**

16 - 3 1/2" sqs      8 - 3 7/8" sqs      4 - 3 1/2" sqs

#### Quilt Background

4 - 9 1/2" sqs

2 - 7 1/2" sqs - cut once on the diagonal (corner triangles)



2 - 14 1/2" sqs - cut twice on the diagonal (setting triangles)



#### Accent

2 - 1 1/2" x 38 3/4" (sides)

2 - 1 1/2" x 40 3/4" (top & bottom)

6 - 2 1/2" x 42" (binding)

#### Outside Borders - Cut from length of fabric along selvage.

2 - 5 1/2" x 40 3/4" (sides)

2 - 5 1/2" x 50 3/4" (top & bottom)

### Sewing

Seam allowances: Standard 1/4"

Arrows indicate pressing direction

### Block Assembly

#### Block 1

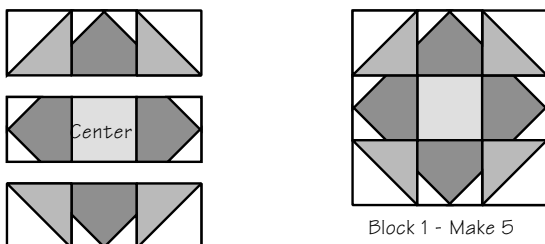
1. Place 3 7/8" square block backgrounds and Block 1-green pieces right-side-together. Sew 1/4" from each side of drawn line. Cut apart on drawn line. Press to green.



2. Place 2" block background square on top left side of Block 1-black piece. Cut away 1/4" from sewn line and press. Repeat for other side.



3. Assemble five Blocks 1 using Illustration as guide.

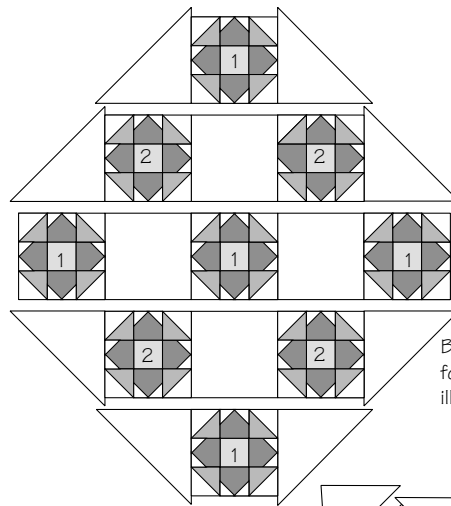


Block 1 - Make 5  
Block 2 - Make 4

### Block 2

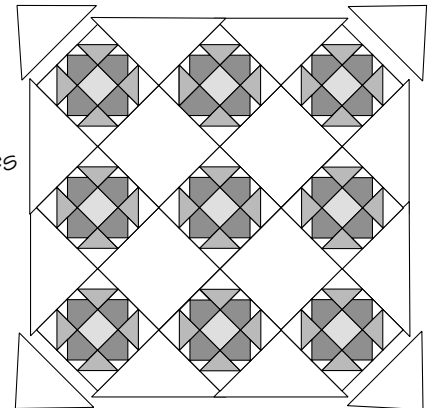
1. Assemble same as Block 1, substituting Block 2 - green/black and center pieces. Assemble four Blocks 2.

### Quilt Assembling



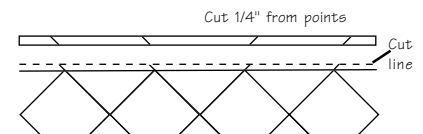
1. Using pieced blocks, squares, and setting triangles, assemble rows as shown. Press seams away from blocks.

Block number placement found inside blocks in illustration.

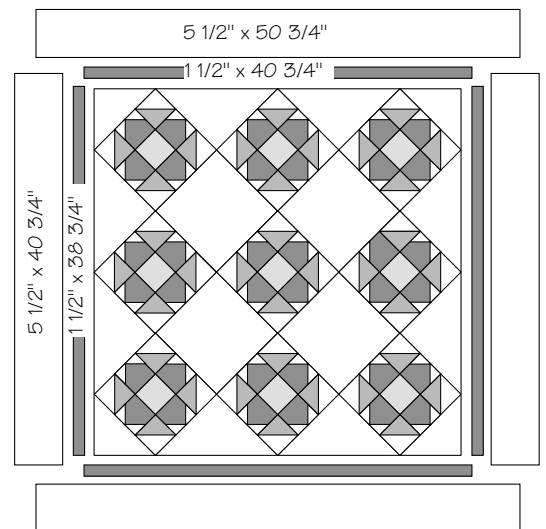


2. Sew corner triangles to the quilt top.

3. Trim outside edges of quilt 1/4" from points. Sew around quilt 1/8" from outside edge to prevent stretching.



4. Add 1 1/2" accent borders, sides first, then top and bottom. Repeat using 5 1/2" borders.



5. Layer, quilt, and bind.

While all possible care has been taken to ensure the accuracy of this pattern, we are not responsible for printing errors or the way in which individual work varies.