

Garden Tote

by Adrienne Franklin

Pattern Level: Easy but some sewing experience is necessary

Seam Allowances: 1/2" seam allowance used and has been added unless otherwise indicated.

Finished size: 12"x 6"x 12"

Materials Needed:

1 1/4-yard Mary Engelbreit pink flowerpot print
1 1/4-yard Mary Engelbreit blue check print
3/4-yard polyester fleece
1 1/8-yard heavy weight fusible interfacing such as Craft fuse
5" – 1 1/2" wide Velcro, 1-2 packages of Iron – On Vinyl (optional), matching thread, washable fabric marker.



Cutting:

From blue print cut:

1 front/back 13" x 31"
1 front/back lining 13" x 31"
1 bottom 9" x 13"
2 side bottoms 2" x 7"
2 sides 7" x 13"
2 side linings 7" x 13"
2 handles 3 1/2" x 18"

From Fleece cut:

1 front/back 13" x 31"
2 sides 7" x 13"
2 handles 2 1/2" x 18"

From pink print cut:

2 pockets 9" x 25" (front and back)
2 pocket linings 9" x 25"
2 side pockets 9" x 11"
2 side pocket linings 9" x 11"

From interfacing cut:

2 pockets 9" x 25" (front and back)
2 side pockets 9" x 11"

Assembly

- 1) Following manufacturer's instructions, fuse interfacing pieces to the wrong side of front/back and side pocket lining pieces. Sew each

interfaced pocket lining to a matching pocket piece right sides facing, stitching only along top edge. See **Fig.1**. Turn each pocket right side out. Baste raw edges together along side and bottom edges of pockets. See **Fig. 2** and use a washable marker to mark stitching lines on front and back pockets.

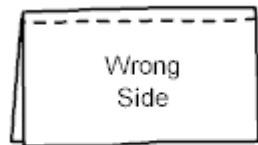
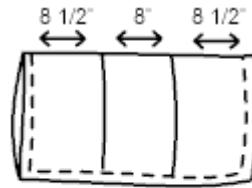


Fig. 1



Front & Back Pockets

Fig. 2

2)

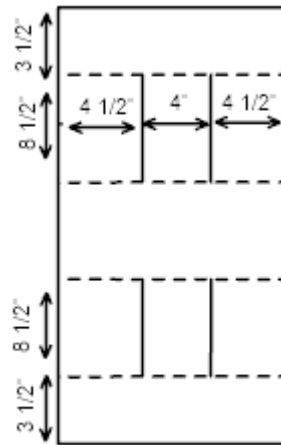


Fig. 3 Front & Back

Mark pocket placement and stitching lines on the right side of 1 front/back piece as shown in **Fig. 3**. Pin this front/back piece to matching fleece piece and pin raw edges together. Baste around raw edges.

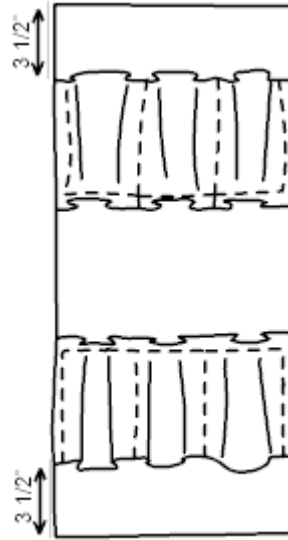


Fig. 4

Pin pockets to front/back piece matching side raw edges, placement lines and stitching lines as shown in **Fig. 4**. Baste pockets to front/back along side raw edges. Stitch along stitching lines through all layers. Form evenly spaced pleats along bottom raw edges of pockets and baste through all layers to hold pleats.

- 3) If desired, follow manufacturer's instructions and fuse iron-on vinyl to the right side of 9" x 13" bottom piece and to the right side of 2 - 2" x 7" side bottom pieces. (If you wish to have a water resistant lining you may want to use iron-on vinyl on the right side of front/back and side lining pieces as well). Finger press (never iron directly on vinyl) 1/2" to wrong side on each long edge of bottom piece. See **Fig. 5**. Pin bottom piece over bottom of bag, right side up with folded edges of bottom piece overlapping bottom raw edges of pockets. Stitch along folded edges of bottom piece through all layers.

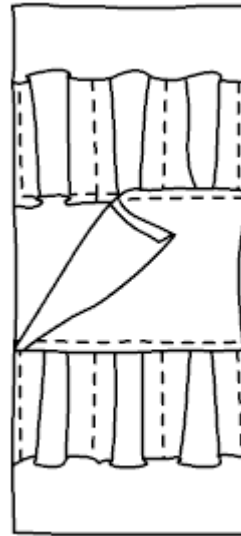
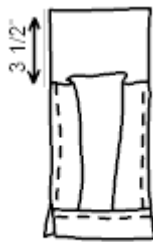


Fig. 5

- 4)



Side Fig. 6

- Baste side fleece pieces to the wrong side of each bag side. Pin side pockets to bag sides, raw edges even along sides and placing top edge of pocket 3 1/2" from top edge of bag side as shown in **Fig. 6**. Baste pocket in place along side edges. Form pleats on the bottom of pockets and baste close to bottom edge of pocket through all layers. Finger press 1/2" on 1 long edge of each side bottom piece and pin folded edge over bottom of pocket overlapping raw edges of pocket. See **Fig. 6**. Stitch along fold through all layers.

- 5) Refer to **Fig. 7**. On the wrong side of front/back and front /back lining, mark a dot 12 1/2" from each upper edge along both sides as shown. To reinforce stitch along seam line about 1" on either side of dot. Clip seam allowances to dots as shown. Pin bag sides to front/back right sides facing, matching marked dots to side corners. Stitch, pivoting at dots. Sew lining front/back to lining sides in the same manner, leaving an opening in 1 seam for turning.

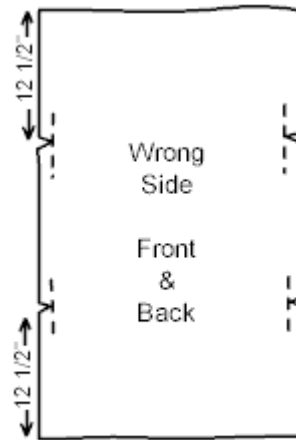


Fig. 7

- 6) Handles: Center fleece on wrong side of each handle piece. Press 1/2" to the wrong side on each long edge of handles. See **Fig. 8**. Fold handles in half lengthwise enclosing raw edges and stitch close to both folded edges.



Fig. 8

- 7) Pin handles in place on outside of bag as shown in **Fig. 9**, with raw edges even. Baste to hold. Insert bag into lining right sides facing and stitch together along top edge. Turn right side out. Stitch opening closed. Top stitch along top edge. Stitch Velcro to front and back inside of bag between handles placing long edge of Velcro about 3/8" from top edge of bag.

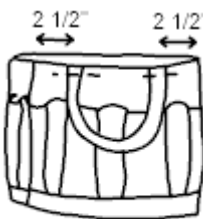


Fig. 9

While all possible care has been taken to ensure the accuracy of this pattern, we are not responsible for printing errors or the way in which individual work varies.