

# Promenade

by Retta Warehime



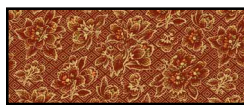
Finished size: 58 1/2" x 70 1/2"



20309-N 5 1/2 yds  
Borders & Backing



20310-E 1 5/8 yds  
Background



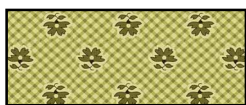
20310-R 1/4 yd  
Squares



20313-M 1 yd  
Accent & Binding



20313-N 1 1/8 yds  
Triangles



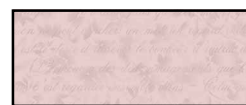
20312-H 1/4 yd  
Squares



20311-V 1/4 yd  
Squares



20311-B 1/4 yd  
Squares



20316-D 1/4 yd  
Squares

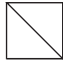


20316-B 1/4 yd  
Squares

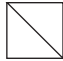
Designed by Retta Warehime  
 Skill Level: Beginner to Advanced Beginner  
 Finished Block size: 12"

### Cutting

#### Light Background (20310-E)

40 - 6 7/8" squares  
 (cut diagonally corner to corner) 

#### Dark Triangles (20313-N)

80 - 3 7/8" squares  
 (cut diagonally corner to corner) 

#### Squares (20310-R, 20316-B, 20316-D, 20311-B, 20311-V, 20312-H)

14 - 3 1/2" squares from each

#### Accent Border and Binding (20313-M)

2 - 1 3/4" x 60 1/2" strips (sides)  
 2 - 1 3/4" x 51" strips (top & bottom)  
 7 - 2 1/2" x 42" strips for binding

#### Outside Border and Backing (20309-N)

**\*\*Cut border lengths parallel to selvages**

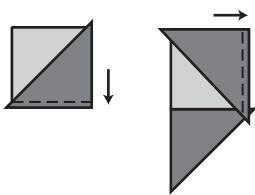
2 - 4 1/2" x 63" strips (sides)  
 2 - 4 1/2" x 59" strips (top & bottom)

### Sewing

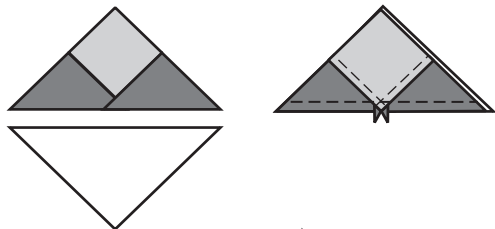
Seam allowances are standard 1/4".

Arrows indicate pressing direction.

1. Sew one dark triangle to each side of 80 - 3 1/2" squares (you will have four left over).



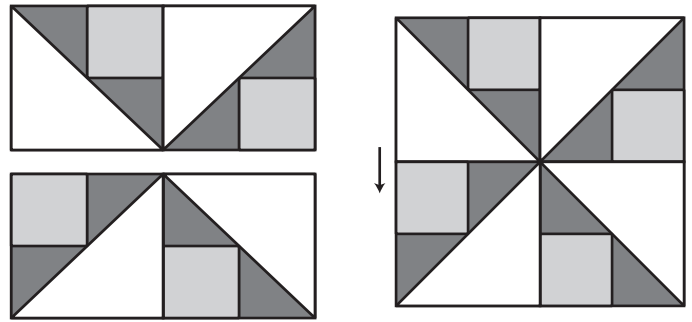
2. Sew light background triangles to the triangle units. Sew with triangle units on top to see intersection of points. Press to background triangles.



3. Join two units together as shown. Make 40.

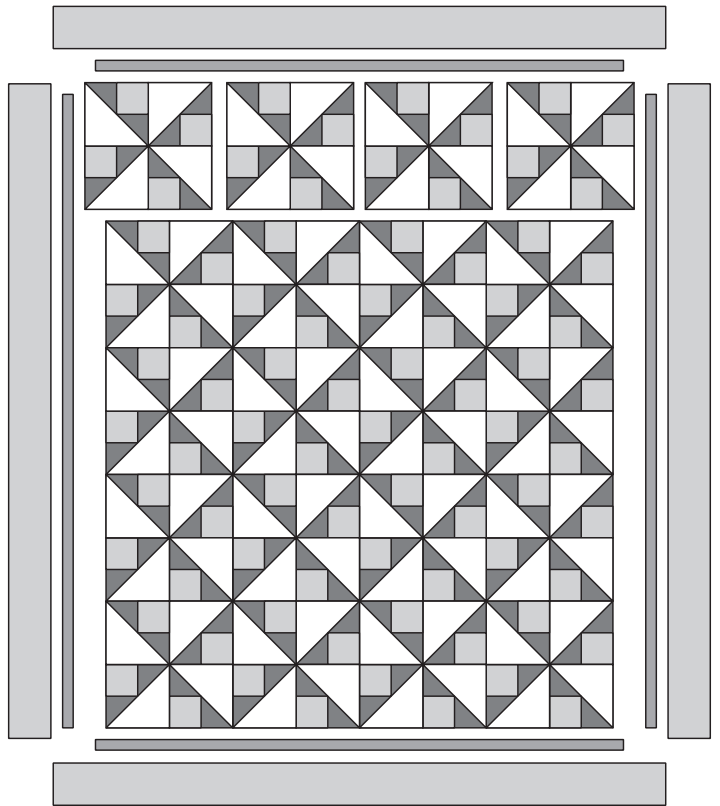


4. Join units to make 20 blocks.



5. Using illustration as guide, make 5 rows with 4 blocks in each row. Press in opposite directions.

6. Add accent and outside borders. Sides first then top and bottom.



7. Layer, quilt and bind.

While all possible care has been taken to ensure the accuracy of this pattern, we are not responsible for printing errors or the way in which individual work varies.